

FESTO

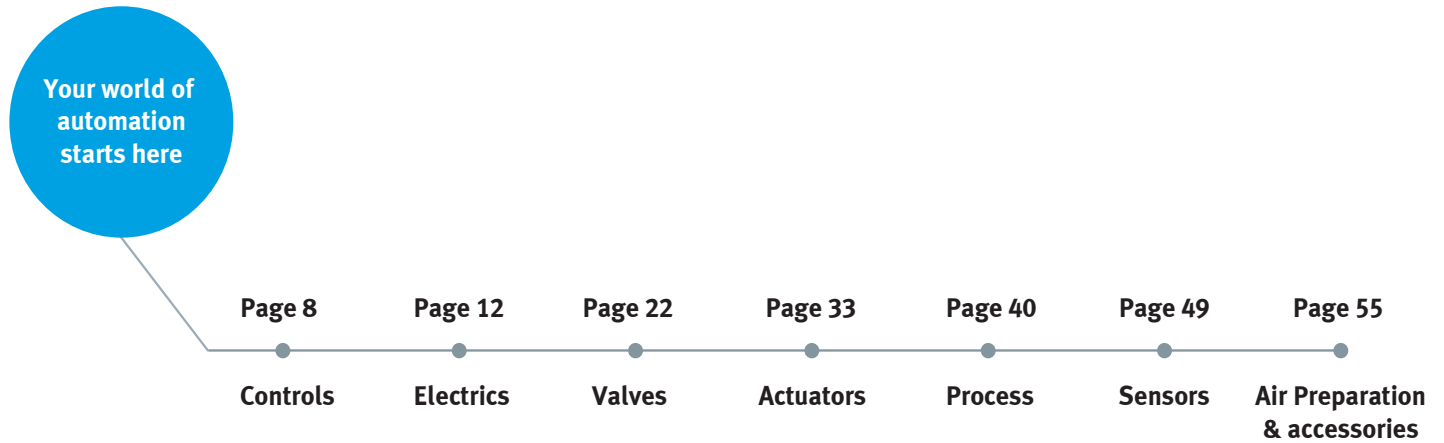


**Key
Automation
Product**

The key to your daily automation needs

Our goal is to make you more productive. From actuators to accessories for factory automation as well as process automation - you can reduce procurement complexity for both the electric and pneumatic control chain.

At the same time, we work consistently on our production and delivery capacities worldwide to ensure that you receive the products you ordered promptly, even in large quantities.



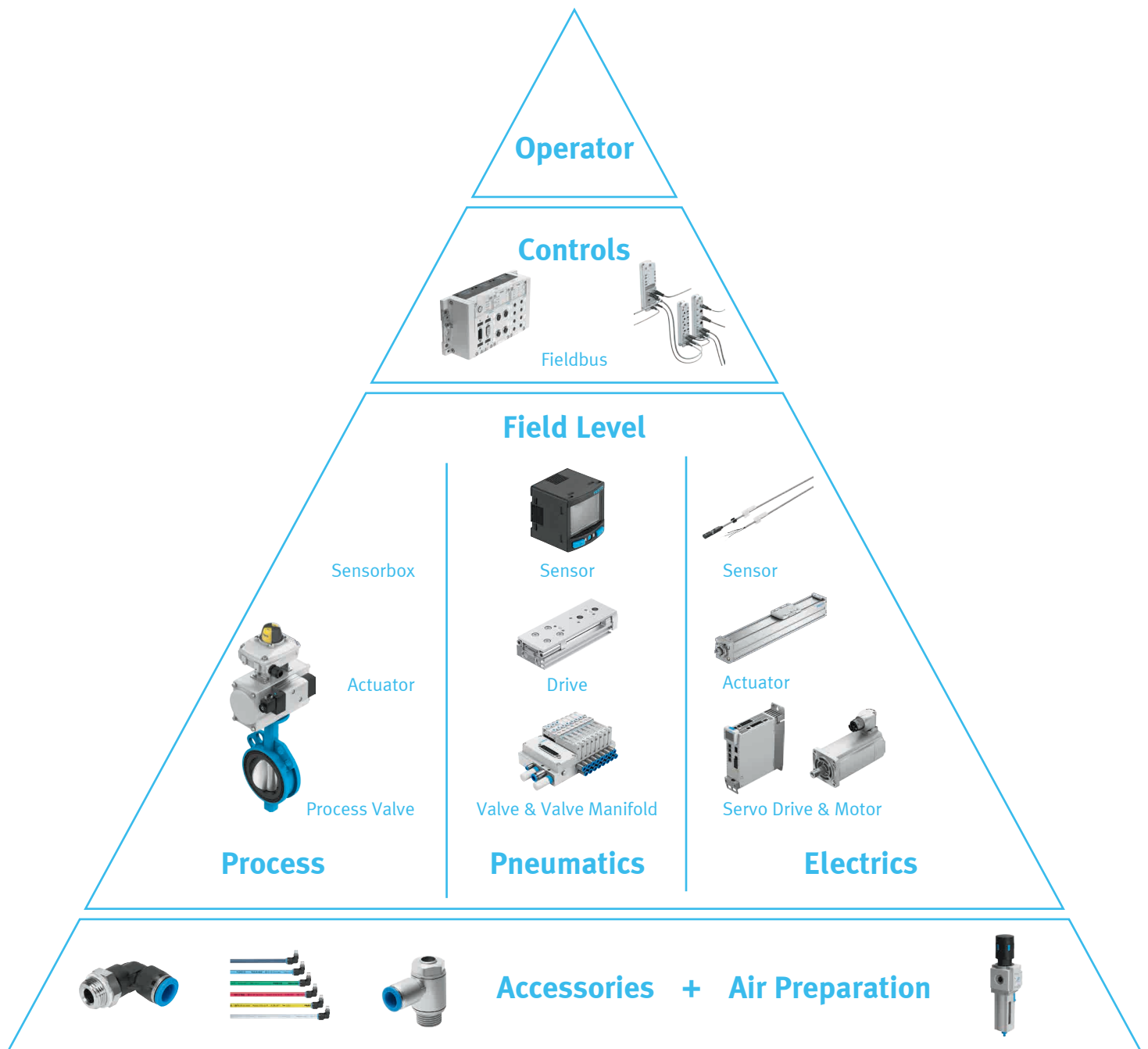
A simplified product selection.

Check out our new Festo Online Shop!



You are looking for cost-effective automation?
 You need short delivery times?
 We deliver large quantities fast and worldwide.

→ **WE ARE THE ENGINEERS OF PRODUCTIVITY.**



IIoT Level

Host Integration 3rd party controller

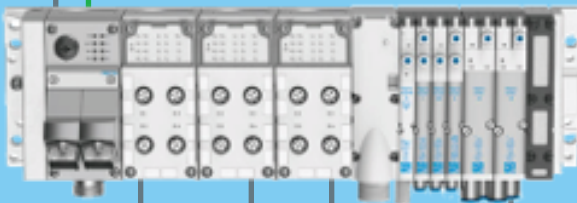


Control Level



Controller/ Field bus with valve terminal

Decentralised I/O



Device Level

Valve terminal

Standard I/O

IO-Link Master



Media valve



Process valve



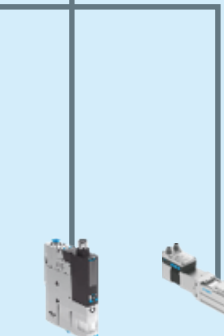
Slide & Cylinder



Sensors



IO-Link sensors



Vacuum generator



Simplified motion series

Festo
Automation Suite

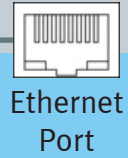


Digitalization

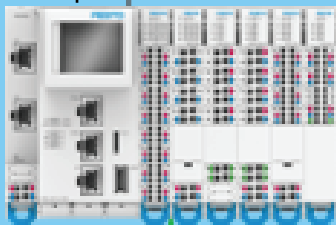
IoT
GW



MQTT
AMQP
OPC UA



Ethernet
Port



Motion
Controller/ PLC

↑ Real-time communication ↓

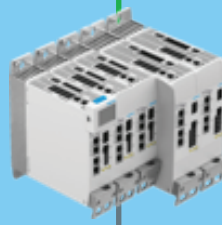
Remote I/O
Terminal



Compact
Servo Drives



Compact
Servo Drives



Small
Servo Drives



Proportional
valve



Gripper

Economic
Servo Drives



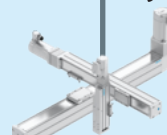
Electrical
Cylinder

Economic
Motor

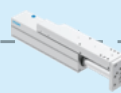


Handling
System

High
Performance
Motor

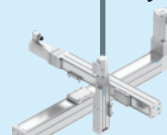


Mini Slide



Drive

Handling
System



Rotary
Gripper



CONTROLS	Controller CPX-E  Pg 09	Remote I/O CPX-E  Pg 09	Controller CPX  Pg 10	Distributed remote I/O CPX-AI-I  Pg 10	Operator unit CDPX  Pg 11		
	Servo drive CMMB-AS  Pg 14	Servo drive CMMT-AS  Pg 14	Servo drive CMMT-ST  Pg 14	Servo motor EMMB-AS  Pg 15	Servo motor EMMT-AS  Pg 15	Stepper motor EMMS-ST  Pg 15	
ELECTRICS	Compact electrical cylinder EPC  Pg 19	Rodtype electric cylinder ESBF  Pg 19	Rodless electrical drive EGC  Pg 19	Rodless electrical drive ELGC  Pg 20	Electrical spindle drive ELGT  Pg 20	Mini slide EGSC-BS  Pg 20	
	Optimised compact valve VUVG-S  Pg 23	Compact valve VUVG  Pg 23	Optimised standard valve VUVS-S  Pg 24	Standard valve VUVS  Pg 24	Namur valve VSNC  Pg 25	Hand lever valve VHER  Pg 25	
VALVES	Valve terminal VTUG  Pg 30	Valve terminal VTUS  Pg 30	Valve terminal MPA-L  Pg 31	Valve terminal MPA-S  Pg 31	Valve terminal VTSA  Pg 32		
	Short stroke cylinder ADN-S  Pg 34	Short stroke cylinder ADN  Pg 34	Compact round cylinder DSNU-S  Pg 34	Standard round cylinder DSNU  Pg 35	Standard cylinder DSBC  Pg 35	Guided drive DFM  Pg 35	
ACTUATORS	Long stroke gripper DHPL  Pg 38	Flat gripper HPPF  Pg 38	Semi rotary drive DRVS  Pg 38	Semi rotary drive DRRD  Pg 39			
	Quarter turn actuator DFPD  Pg 41	Media separated valve VYKA  Pg 41	Solenoid valve VZWD  Pg 42	Solenoid valve VZWF  Pg 42	Solenoid valve VZWM  Pg 43	Pinch valve VZQA  Pg 43	
PROCESS	Sensor box SRBG  Pg 46	Sensor box SRBI  Pg 46	Positioner CMSX  Pg 47	Positioner CMSH  Pg 47	Corrosive resistance filter regulator PCRP  Pg 48		
	Cylinder switch SDBT-MSB  Pg 50	Cylinder switch SDBC-MSB  Pg 50	Cylinder switch SDBT-MSX  Pg 50	Cylinder switch SMT-8M/10M  Pg 50	Inductive sensor SIEN  Pg 51	Position sensor SRBS  Pg 51	
AIR PREP & ACCESSORIES	Air preparation MS2-B  Pg 56	Air preparation MS4-B/MS6-B  Pg 56	Air preparation MS4/MS6  Pg 57	Pneumatic tube PUN-H/F  Pg 57	Push in connector NPQE  Pg 58	Push in connector QS  Pg 58	
	Silencer U  Pg 60	Metal silencer AMTE  Pg 61	Suction cup VAS  Pg 61				

Simplified series compact electric cylinder
EPCS



Pg 16

Simplified series toothed belt drive
ELGE



Pg 16

Simplified series mini slide
EGSS



Pg 17

Simplified series electrical drive
ELGS



Pg 17

Simplified series short stroke electrical cylinder
EPCE



Pg 18

Simplified series rotary drive
ERMS



Pg 18

Rotary gripper module
EHMD



Pg 21

Manual valve
VHEF



Pg 26

Mechanical valve
VMEF



Pg 26

Vacuum generator
OVEL



Pg 27

Vacuum generator
VN



Pg 27

Proportional pressure regulator
VEAA/VEAB



Pg 28

Proportional flow control valve
VEMD



Pg 28

Mini slide
DGST



Pg 36

Linear drive
DGC-K



Pg 36

Guided linear drive
DGC



Pg 36

Parallel gripper
DHPC



Pg 37

Angular gripper
DHWC



Pg 37

Radial gripper
DHRC



Pg 37

Angle seat valve
VZXA



Pg 44

Linear actuator
DFPC



Pg 44

Actuator assembly unit
KDFP



Pg 45

Butterfly valve assembly unit
KVZA



Pg 45

Ball valve assembly unit
KVZB



Pg 45

Sensor box
SRBC



Pg 46

Pressure sensor
SPAN-B



Pg 51

Pressure sensor
SPAN



Pg 52

Pressure sensor
SPAU



Pg 52

Pressure sensor
SDE5



Pg 53

Flow sensor
SFAH



Pg 53

Connecting cable
NEBU



Pg 54

Flow control valve
VFOE



Pg 58

Metal flow control valve
GRLA/Z-D



Pg 59

Piloted check valve
HGL



Pg 59

Pressure regulator
VRPA



Pg 59

Coupling socket
KD



Pg 60

Safety coupling
NPHS-D6/S6



Pg 60

Terminal CPX

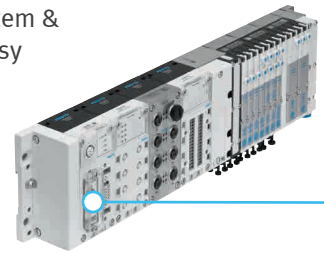


PLC/Motion + Pneumatics
Words 1st Hybrid Controller



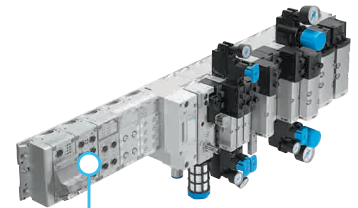
Modular Remote Electric I/O system & Pneumatics valve terminal for Easy connection & Diagnostics

CPX-MPA for Low flow & High-density connection

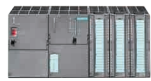


CPX-VTSA for High Flow & High Availability

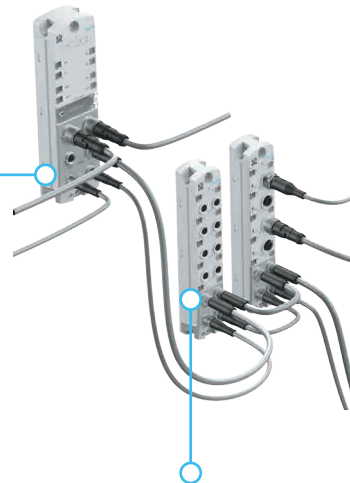
Supported Fieldbus system



Distributed Remote I/O



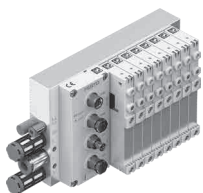
Supported Fieldbus



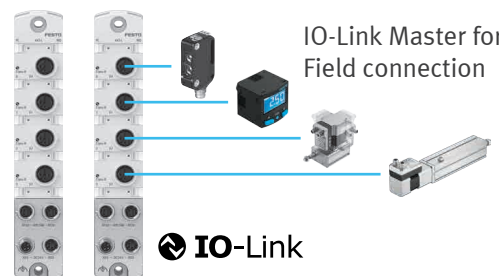
CPX-AP-I : Keep your control closer to the process

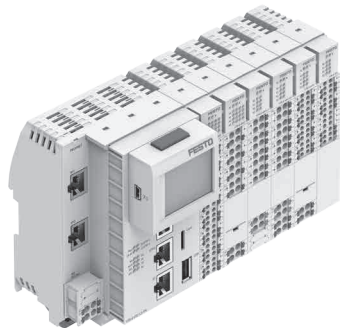
Robust IP68/67 Digital & Analog I/O module

VTUG/MPAL valve Terminals



IO-Link Master for Field connection

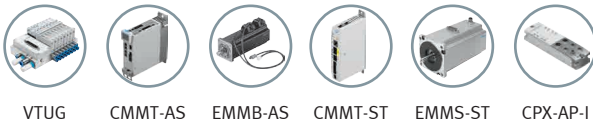




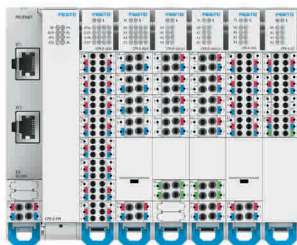
PLC/Modular/Motion/Robotic Controller CPX-E

- CPX-E is a high-performance controller for automation system focusing primarily on motion & robotic controls
- Multi protocol connection widely available
- Extended software functions for seamless integration and simplified control of electric drives
- The following modules are available:
 - PLC/Motion/Robotic Controller
 - Multi Protocol bus Interface modules
 - Input/output modules
 - IO-Link master modules
 - Encoder Module

Frequently bought together



Remote I/O system CPX-E



- Reliable & cost effective remote I/O system
- Multi protocol bus interface module
- The following modules are available:
 - Input/output modules
 - IO-Link master modules

Frequently bought together



Controls



Distributed Remote I/O system CPX-AP-I

- IP65/IP67 Remote I/O system brings input/output controls closer to equipment or process, no electrical panel is needed to mount CPX-AP-I module
- Cost effective remote I/O system with up to 80 freely combinable modules/valve terminals per bus interface, up to 50 m between every module
- Easy to adapt to difference control system by exchanging the bus interface
- Realtime capability
- Extremely easy to assemble & integrate
- The following modules are available:
 - Multi Protocol bus Interface modules
 - Input/output modules
 - IO-Link master
 - Interface to the valve terminal

Frequently bought together



VTUG



NEBC



Modular electrical terminal CPX

- Comprehensive function integration with technology modules
- Installation variants:
 - Stand-alone as remote I/O
 - With valve terminal VTSA/VTSA-F/VTSA-F_CB
 - With valve terminal MPA-L
 - With valve terminal MPA-S
- I/O modules:
 - Digital
 - Analogue
- Optional CODESYS controller

Frequently bought together



NEBU



VTSA



MPA-L



MPA-S





Human-Machine Interface CDPX

- Linux Operating system
- Display Size: 4", 5", 7", 10", 15", 21" Inch
- Built in Ethernet port and Serial port available
- Remote target visu and chromium browser
- Optional: PLC with codesys , Ethercat/Profinet Master

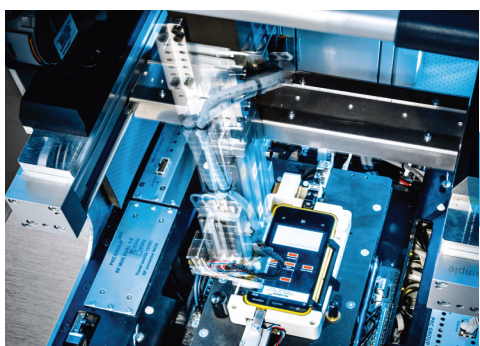
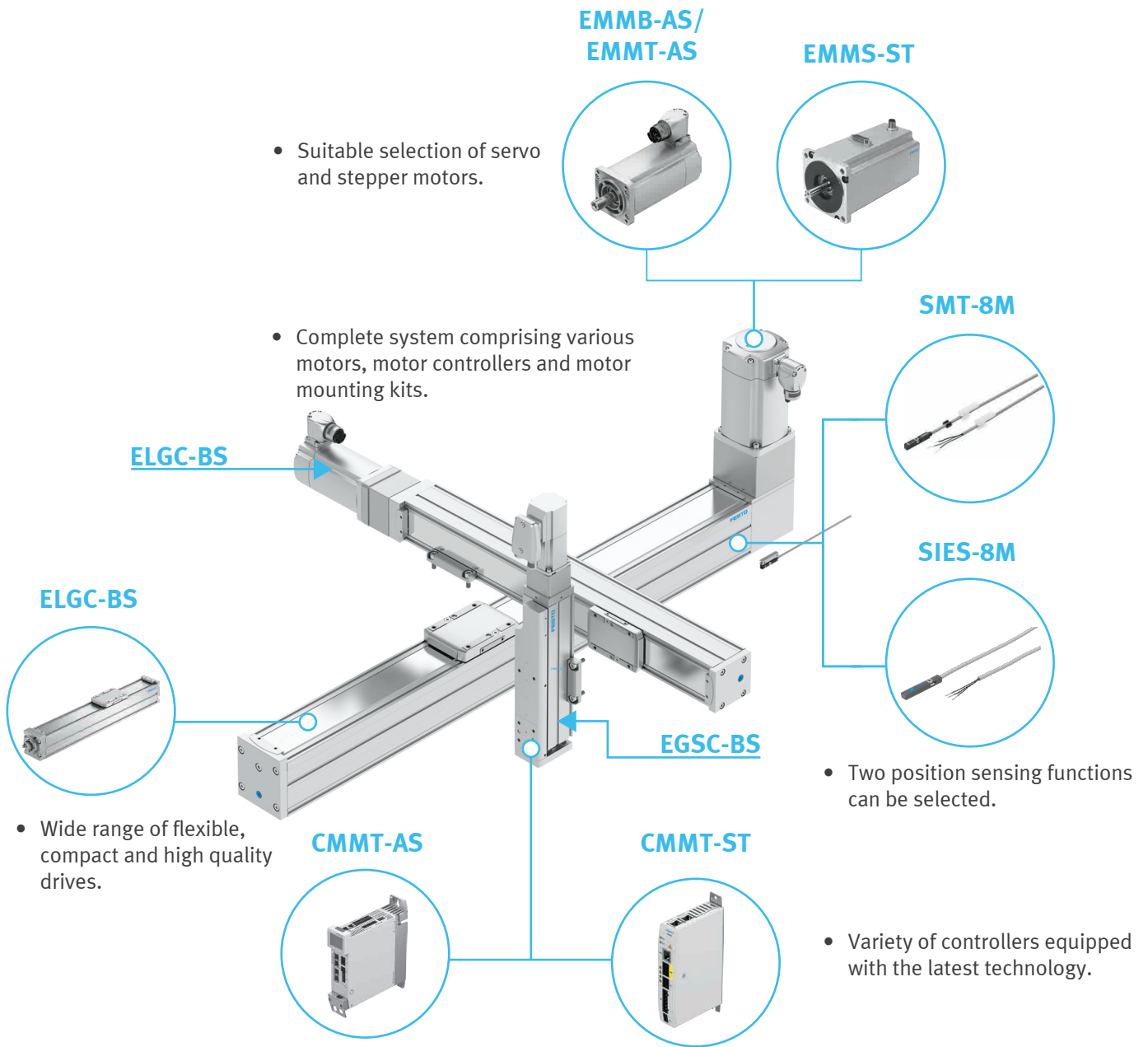
Frequently bought together



CPX-E



Spindle axes ELGC-TB/BS



Compact and precise testing unit in assembly line

Servo drives CMMT-AS

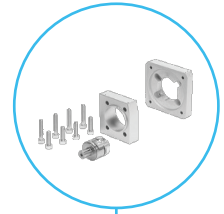
- Easy to integrate into Ethernet-based (All-in-one) host systems with extensive documentation and function blocks



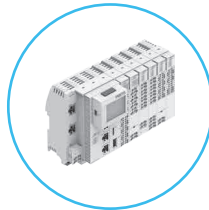
- High-performance control and automation system focusing primarily on motion control functions

- Specific kit for all electro-mechanical axes from Festo.
- Each kit includes coupling housing, couplings, motor flange and screws.
- IP65 is available as an option.

EAMM



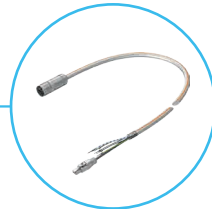
CPX-E



EMMB-AS

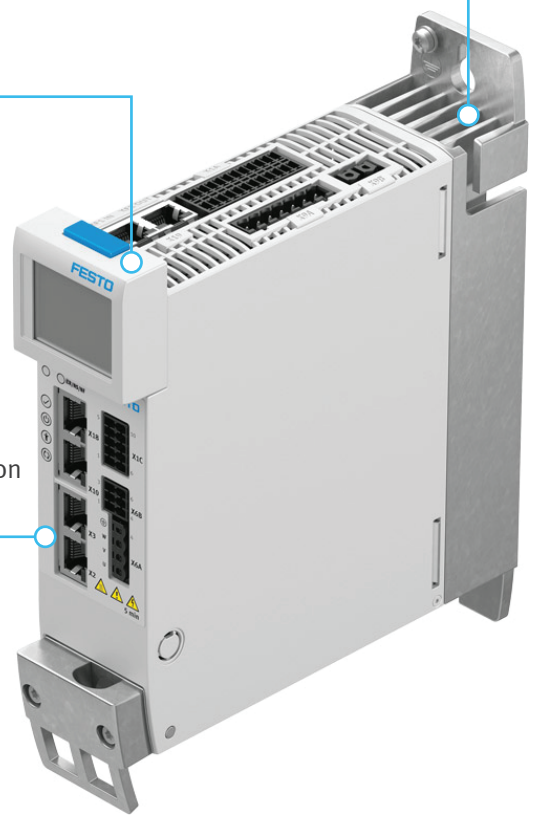
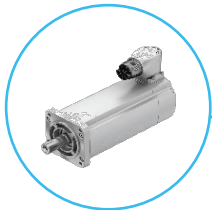


NEBM

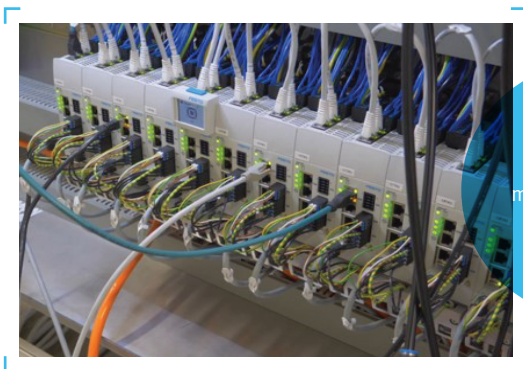


- Motor cables with degree of protection to IP67.

EMMT-AS



- Suitable selection of servo motors.



Complete motion control in packaging line



Transfer of blood samples in and out of the cold storage system



AC servo drives economical CMMB-AS (For use with EMMB-AS motor)

- Complete integration of all components for controller and power unit, including RS232 and pulse direction interface
- Operated as a torque, rotational speed or position controller
- Nominal voltage: 230 V AC
- Nominal current: 1.5 ... 7 A
- Nominal power: 100 ... 750 W

Frequently bought together



EMMB-AS



AC servo drives high performance CMMT-AS

- Precise force, speed and position control
- Auto-tuning and automatically optimises of control behaviour
- Multi-protocol, the required protocol can be selected via software or directly on the servo drive
- Nominal voltage: 1 phase 230 and 3 phase 400 V AC
- Nominal current: 2.8 ... 15 A
- Nominal power: 0.35 ... 6 kW

Frequently bought together



EMMB-AS



EMMT-AS



Extra low voltage servo drives CMMT-ST

- Space-saving low voltage servo drive for stepper motors and brushless direct current motors (BLDC or EC motor)
- Voltage 24, 48 V DC
- Nominal current 8 A (peak 10 A)
- Multi protocol bus connection widely available

Frequently bought together



EMMS-ST





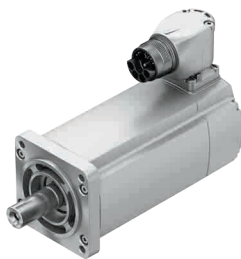
AC servo motors economical EMMB-AS

- Size: 40, 60, 80
- Rated torque: 0.32 ... 2.39 Nm
- Nominal current: 1.3 ... 3.8 A
- Brake and Keyway option
- Single-turn/Multi-turn encoder options

Frequently bought together



CMMT-AS CMMB-AS



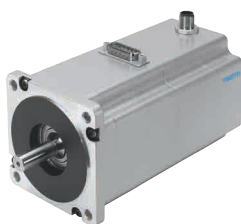
AC servo motors high performance EMMT-AS

- Simple connection technology (OCP: one cable plug)
- Single-turn and Multi-turn (battery-less) EnDat 2.2 encoder technology
- Size: 60, 80, 100, 150, 190
- Nominal torque: 0.6 ... 82.4 Nm
- Voltage: 325 ... 680 V DC
- Nominal current 1.4 ... 20 A

Frequently bought together



CMMT-AS



Stepper motors EMMS-ST

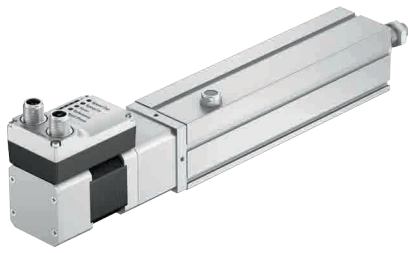
- Size 28, 42, 57, 87
- Holding torque 0.09 ... 9.3 Nm
- Voltage 24 ... 48 V DC
- Nominal current 1.4 ... 9.5 A
- Suitable motor mounting kit for all Festo actuators
- Small increments and high driving torque

Frequently bought together



CMMT-ST



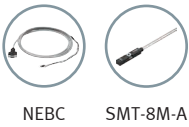


 **IO-Link**

Simplified series compact electrical cylinder actuators EPCS

- Simplified rod type ball screw actuator series for easy setup
- Easy control with only 2 digital inputs
- Precise closed-loop control of speed, position and force
- Size: 32, 45, 60
- Stroke length: 25 ... 500 mm
- Force: 150 ... 900 N
- Speed up to 0.22 m/s

Frequently bought together

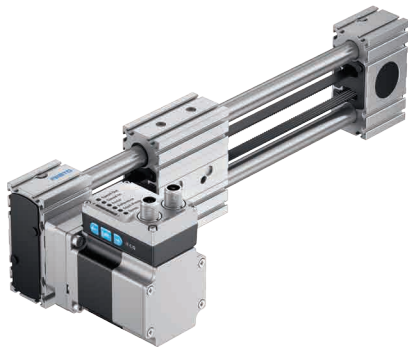


NEBC

SMT-8M-A



Simplified series toothed belt actuators ELGE



 **IO-Link**

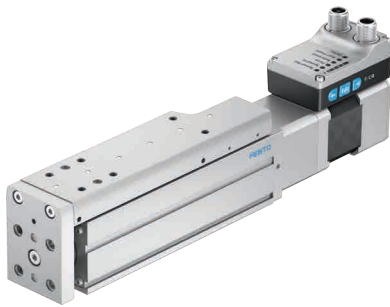
- Simplified rod guided toothed belt actuator series for easy setup and control
- Easy control with only 2 digital inputs
- Precise closed-loop control of speed, position and force
- Size: 35
- Stroke length: 50 ... 800 mm
- Force: 50 N
- Speed up to 1.2m/s

Frequently bought together



NEBC

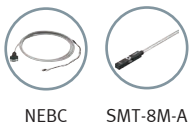




Simplified series mini slide actuators EGSS

- Simplified guided ball screw actuator series for easy setup
- Easy control with only 2 digital inputs
- Precise closed-loop control of speed, position and force
- Size: 32, 45, 60
- Stroke length: 25 ... 200 mm
- Force: 60 ... 250 N
- Speed up to 0.25 m/s

Frequently bought together



NEBC

SMT-8M-A

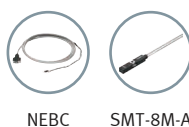


IO-Link

Simplified series spindle and toothed belt actuators ELGS

- Simplified protected ball screw and toothed belt actuator series for easy setup
- Easy control with only 2 digital inputs
- Precise closed-loop control of speed, position and force
- ELGS-BS
 - Size: 32, 45, 60
 - Stroke length: 100 ... 800mm
 - Force: 40 ... 200 N
 - Speed up to 0.025 m/s
- ELGS-TB
 - Size: 45, 60
 - Stroke length: 200 ... 2000mm
 - Force: 65 ... 75 N
 - Speed up to 1.3 m/s

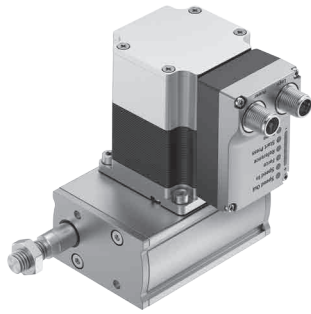
Frequently bought together



NEBC

SMT-8M-A





 **IO-Link**

Simplified series short stroke toothed belt actuators EPCE

- Simplified short stroke toothed belt actuator series for easy setup
- Easy control with only 2 digital inputs or IO-Link
- Precise closed-loop control of speed, position and force
- Size 45, 60
- Stroke length 5 ... 80 mm
- Force 85 ... 150 N
- Speed up to 0.6 m/s

Frequently bought together



NEBC



SMT-8M-A



 **IO-Link**

Simplified series rotary actuators ERMS

- Simplified rotary actuator series for easy setup
- Easy control with only 2 digital inputs or IO-Link
- Precise closed-loop control of speed, position and force
- Size 25, 32
- Rotation angles 90°, 180°
- Peak torque 2.7 ... 5.6 Nm
- Speed up to 150 RPM

Frequently bought together



NEBC





Compact electric cylinders EPCC

- Rod style ball screw actuator
- Size: 25, 32, 45 and 60
- Stroke: 25 ... 500 mm
- Force: 75 ... 1000 N
- Speed up to 0.6 m/s

Frequently bought together



EMMB-AS EMMT-AS EMMS-ST SMT-8M-A/
SIES-8M



Electric cylinders ESBF

- Rodstyle ball/lead screw actuator
- Motor can be mounted using axial or parallel kit
- Size: 32, 40, 50, 63, 80, 100
- Stroke length: 30 ... 1500 mm
- Force: 600 ... 17000 N
- Speed up to 1.35 m/s
- Optional: Electric ball screw cylinder with clean design (food application)

Frequently bought together



CMMB-AS EMMB-AS CMMT-AS EMMT-AS SMT-8M-A EMMS-AS



Toothed belt actuators EGC-TB

- Toothed belt actuator
- Size 50, 70, 80, 120, 185
- Stroke length 50 ... 8500 mm
- Force 50 ... 2500 N
- Speed up to 5 m/s
- Repetition accuracy ± 0.08 mm (± 0.1 mm for size 185)

Frequently bought together



CMMB-AS EMMB-AS CMMT-AS EMMT-AS





Toothed belt actuators ELGC-TB

- Protected toothed belt actuator
- Size 45, 60, 80
- Stroke length: 200 ... 2000 mm
- Force 75 ... 250 N
- Speed up to 1.5 m/s
- Repetition accuracy ± 0.1 mm

Frequently bought together



EMMB-AS



CMMB-AS



CMMT-AS



EMMS-ST



CMMT-ST

SIES-8M/
SMT-8M-A

Spindle actuators ELGT-BS

- Protected ball screw actuator
- Size 90, 120, 160
- Stroke length: 50 ... 1400 mm
- Force up to 1575 N
- Speed up to 1 m/s
- Repetition accuracy ± 0.02 mm
- Optimised for use in the electronics and automotive industry as well as in battery production

Frequently bought together



CMMB-AS



EMMB-AS



CMMT-AS



EMMT-AS



Mini slides EGSC-BS

- Guided ball screw actuator
- Size 25, 32, 45, 60
- Stroke length 25 ... 200 mm
- Speed up to 0.6 m/s
- Integrated recirculating ball bearing guide

Frequently bought together



CMMB-AS



CMMT-AS



EMMB-AS



EMMT-AS



EMMS-ST



CMMT-ST



SIES-8M





Rotary gripper module EHMD

- Compact, Ideal for capping/decapping and Pick&Place application
- Infinite electrical rotation
- Choice of electrical or pneumatic gripping
- Self-locking incase of energy loss
- Optional: mounting with Z-compensation compensates for the thread pitch of covers on vials during opening and closing
- Max.Torque: 0.3Nm
- Max.Speed: up to 240rpm
- Stroke per gripper jaw: 0...5mm or 0...15mm
- Higher torque variant 0.6Nm (coming soon)

Frequently bought together



CMMT-ST



NEBU



NEBM



Valve VUVG

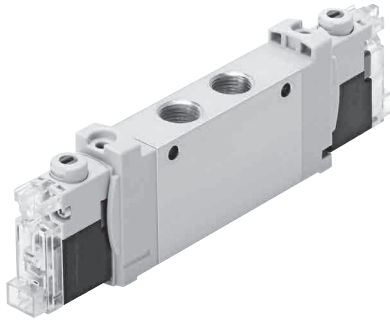
- Highest flow-rate in the market for M5 & G1/8
- Providing fast air delivery and efficiency
- Bigger manual override screw button with multiple accessory options
- Hassle-free with captive screws which help to reduce downtime
- Light weight & high reliability spool giving safe operation
- Fast switching time with air-return spring
- For areas of applications where limited mounting space is required
- Better visibility for improved safety
- Multiple manifold options for in-line and sub-base design options
- Defined compression with built-in step



Used in textile machine for fast speed production of button hole



Gentle placement of large metal sheets from a transport system to a stack by multiple cylinders



Individual valves VUVG-...-S

- Connection M5, M7, G1/8, G1/4
- Flow rate 180... 660 l/min
- Pressure range 1.5 ... 7 bar
- Temperature range -5 ... +50°C
- Voltage 24 V DC
- In-line valves, semi in-line valves, sub-base valves
- Electrical actuated, piloted
- Pneumatic spring return

Frequently bought together



QS



U



AMTE



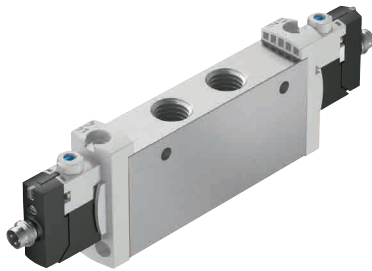
NPQE



PUN-H



GRLA



Individual valves VUVG

- Connection M3, M5, M7, G1/8, G1/4
- Flow rate 90 ... 1380 l/min
- Pressure range -0.9 ... 10 bar
- Temperature range -5 ... +60°C
- Voltage 5, 12, 24 V DC
- In-line valves, semi in-line valves, sub-base valves
- Electrical actuated, piloted
- Pneumatic and mechanical spring return

Frequently bought together



QS



U



AMTE



NPQE

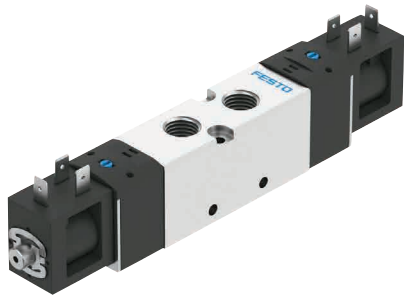


PUN-H



GRLA





Individual valves VUVS-...-S

- Port G1/8, G1/4, G3/8
- Flow rate 500 - 1600 l/min
- Pressure range 1.5 ... 8 bar
- Temperature range -5 ... +50°C
- Voltage 24 VDC
- In-line valve , manifold
- Electrically actuated, piloted
- Pneumatic spring return

Frequently bought together

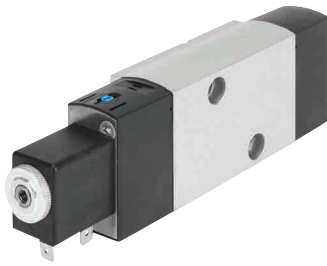


Individual valves VUVS

- Port G1/8, G1/4, G3/8
- Flow rate 500 - 2400 l/min
- Pressure range 1.5 ... 8 bar
- Temperature range -5 ... +50°C
- Voltage 12,24 VDC. 24,110, 230 VAC
- In-line valve , manifold
- Electrically actuated, piloted
- Pneumatic and mechanical spring return

Frequently bought together





SIL certified
according IEC 61508

Individual valves VSNC

- All solenoid coils can be used on an armature tube
- Connection: G1/4, NPT1/4
- Flow rate: 900 ... 1000 l/min
- Voltage: 12, 24, 48 V DC, 24, 48, 120, 230 V AC
- NAMUR port pattern to VDE/VDI 3845
- Solenoid-actuated, piloted/CNOMO interface
- Mechanical spring return
- Diverse Ex solenoid systems, IEC Ex, FM EX
- Convertible from 5/2-way function to 3/2-way function

Frequently bought together



QS



U



MGXDH



MGXIAH



Hand level valves VHER

- Valve function 4/3. Mid closed, open or pressurised
- M5, G1/8, G1/4, G1/2 connection
- Metal and polymer lever
- Vacuum operation possible
- Flow rate 170 - 3800 l/min

Frequently bought together



QS



U



AMTE



NPQE



PUN-H





Manually operated valves VMEF

- Valve function 3/2, 5/2, 5/3
- G 1/8, G 1/4 connection
- Selector switch, finger level, hand lever, toggle lever, push-button
- Directly/ Indirect actuated
- Vacuum operation possible
- Flow rate 650 - 1200 l/min

Frequently bought together



QS



PUN-H



NPQE



Mechanically actuated valves VMEF

- Valve function 3/2, 5/2
- G 1/8, G 1/4 connection
- Toggle lever, Roller, Stem
- Directly actuated, pneumatic piloted
- Vacuum operation possible
- Flow rate 750 - 1200 l/min

Frequently bought together



QS

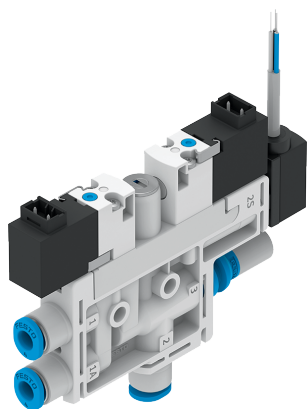


PUN-H



NPQE





Vacuum generators OVEL

- Mounting on supply manifold with max. 8 spaces
- Nominal size: 0.45 ... 0.95 mm
- Connection:
 - Push-in connector QS3, QS4, QS6
- Vacuum solenoid valve ON/OFF
- Optional with ejector pulse
- Integrated vacuum sensor

Frequently bought together



PUN-H



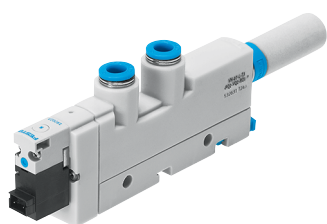
U



AMTE



VAS



Vacuum generators VN

- Nominal size 0.45 to 3 mm
- Connection:
 - Plug connector QS4, QS6, QS8, QS10, QS12
 - Thread M5, G1/8, G1/4, G3/8
- Standard:
 - Vacuum port 90° to supply port
- Inline:
 - Vacuum port in line with supply port
- Pneumatic ejector pulse valve or Integrated vacuum switch

Frequently bought together



PUN-H



U



AMTE

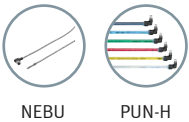




Proportional pressure regulators VEAA & VEAB

- High precision and stable
- Very low power consumption
- Integrated piezo technology
- Silent operation
- Efficient pressure regulation characteristics
- Integrated pressure sensor
- Setpoint input : 0...5V, 0...10V & 4...20mA
- Setpoint output : 1...5V, 0...10V & 4...20mA
- VEAA
 - Flowrate: 7 l/min
 - 3 Pressure regulation ranges from 0.02 to 10 bar
- VEAB
 - Flowrate: 20 l/min
 - 9 Pressure regulation ranges from -1 to 6 bar

Frequently bought together



NEBU

PUN-H



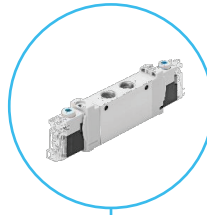
Proportional flow regulators VEMD

- Mass flow controller (MFC) with integrated control electronics
- Dynamic and precise flow regulation with short response time
- Operating medium: air, oxygen, inert gases, nitrogen
- Minimal power consumption thanks to piezo technology
- Silent operation
- Flowrate regulation range: 0...20 l/m
- Operating voltage: 12 or 24 V DC
- Operating pressure: 0...2.5 bar
- Setpoint input & output: 0.2...10V
- Higher flowrate variant up to 200 l/m (coming soon)



Valve Terminal VTUG

VUVG-S



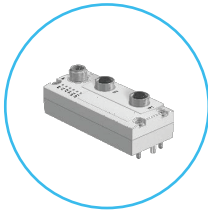
- Semi-inline valves for manifold assembly
- Fast troubleshooting thanks to 360° LED display
- Can be replaced quickly and easily
- Various choices of manual override

VAEM



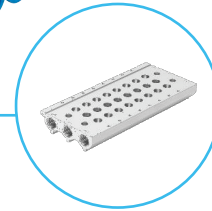
- Variable multi-pin plug connection using Sub-D or ribbon cable
- Support AP communication system

CTEU

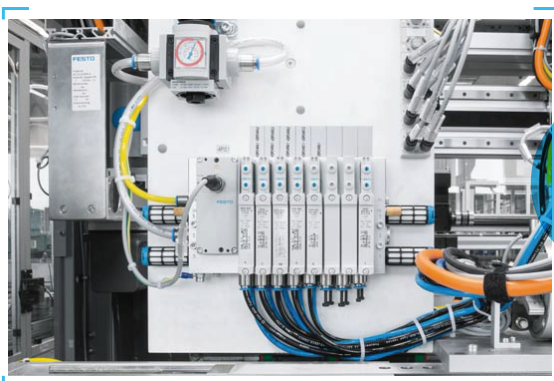
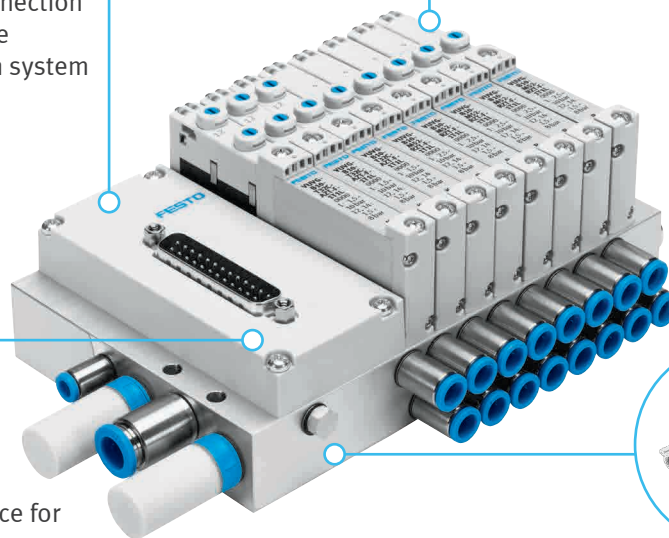


- Festo-specific I-Port interface for bus nodes
- IO-Link® mode for direct connection to a higher-order IO-Link® master

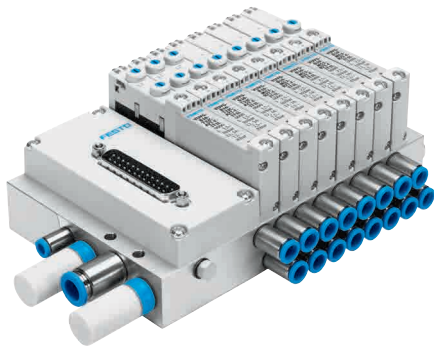
VABM



- Multiple pressure zones available
- Internal or external pilot air in the same manifold rail
- Reversible piston spool valves with up to 24 valve positions



Compact and high flow rates!



Valve terminal VTUG

- Flow rate: 220 ... 1300 l/min
- Valve size 10, 14, 18 mm
- Multi-pin / IO-Link / I-Port connection/
Multi-Protocol Fieldbus available
- Voltage 24 V DC
- Pressure -0.9 ... 10 bar
- Degree of protection IP40/IP67
- Semi in-line and sub-base valves
- Control-cabinet option available

Frequently bought together



U



QS



NEBU



PUN-H



Valve terminal VTUS

- Flow rate 700 ... 2000 l/min.
- Valve size 20, 25, 30 mm
- Individual electrical connection
- Voltage 12, 24 V DC, 24, 110, 120, 230, 240 V AC
- Pressure -0.9 ... 10 bar
- Degree of protection IP65, IP67
- Inline valves
- Solenoid/Pneumatic actuated
- Metal manifold block

Frequently bought together



U



QS

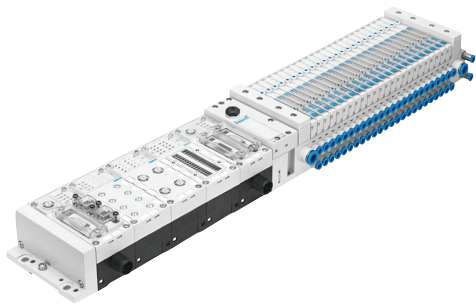


NEBU



PUN-H





Valve terminals MPA-L

- Polymer sub base
- Valve size can be mixed and expandable
- Flow rate 360 ... 850 l/min
- Width 10, 14 and 20 mm
- Multi-pin / IO-Link / I-Port connection / Multi-Protocol Fieldbus available
- Protection class IP65, IP67
- Valve functions 5/2, 5/3, 2x3/2, 2x2/2
- Ideal for control-cabinet installation

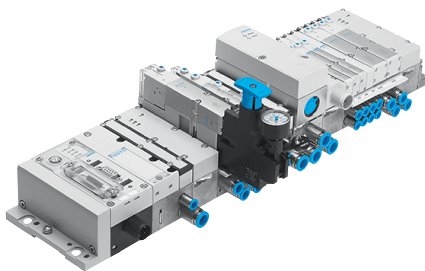
Frequently bought together



CPX

QS

PUN-H



Valve terminals MPA-S

- Flow rate 360 to 700 l/min
- Valve size 10,14, 20 mm
- Expandable up to 64 valve positions with 128 solenoid coils
- Multi-Protocol Fieldbus communication ready
- Pressure range -0.9 to 10 bar
- Protection class IP65
- Electrical remote I/O expandable by CPX electrical terminal
- Diagnostics function available
- Function integration with proportional pressure regulator VPPM

Frequently bought together



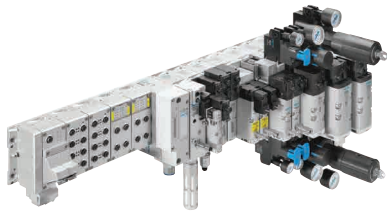
CPX

QS

NEBU

PUN-H





Valve terminals VTSA

- Mix of valve size for optimum flowrate
- Flow rate 770 ... 4000 l/min
- Valve size 18, 26,42,52,65 mm
- Maximum 32 valves position
- Multi-pin / IO-Link / Multi-Protocol Fieldbus available diagnostics function
- Protection class IP65
- Function integration with safely related pneumatic and vacuum generator

Frequently bought together



CPX



NEBU



PUN-H



Mini slides DGST

- All connections on one side.
- Sleeves for centring loads and attachments.
- Proximity sensors can be integrated.
- Both end-positions can be sensed from one side.
- Two sensor slots for sensing.

- 3 cushioning types:
 - Elastic cushioning at both ends, without end-position adjustment
 - Elastic cushioning at both ends, non-adjustable, with end-position adjustment.
 - Shock absorber at both ends, self-adjusting, with end-position adjustment .
 - Precise end-position adjustment is possible from one side.



Lifting application with flexible mounting



Used in packaging line



Short stroke cylinder ADN-S

- Size : 6, 10, 12, 16, 20, 25, 32, 40, 50, 63mm
- Stroke length: 5, 10, 15, 20, 25, 30, 35,40, 45,50 mm
- Male and female thread
- Space and weight saving
- Double-acting and single acting
- Copper and zinc free variant available

Frequently bought together



SME/T-8M-A

GRLA

PUN-H

NPQE

QS



Compact cylinders ADN

- Compact cylinder
- Diameter: 12, 16, 20 ,25, 32, 40, 50, 63, 80, 100, 125 mm
- Stroke length: 1... 500 mm
- Force: 68 ... 7363 N
- Double-acting / single acting
- Position sensing
- Fixed/self-adjusting cushioning
- Numerous variants

Frequently bought together



QS

PUN-H

NPQE



Compact round cylinders DSNU-S

- Compact round cylinder
- Diameter: 8, 12, 16, 20 ,25 mm
- Stroke length: 10 ... 200 mm
- Force: 30 ... 294 N
- Double-acting
- Position sensing
- Fixed/self-adjusting cushioning 185)

Frequently bought together



QS

PUN-H

NPQE





Standard round cylinders DSNU

- Diameter: 8, 10, 12, 16, 20, 25, 32, 40, 50, 63 mm
- Stroke length: 1 ... 500 mm
- Force: 19 ... 1870 N
- Double-acting and single acting
- Position sensing
- Fixed/adjustable/self-adjusting cushioning

Frequently bought together



SME/T-8M-A GRLA PUN-H NPQE QS



Standard cylinders DSBC

- Standard cylinder with two sensor slots
- Numerous variants
- Diameter: 32, 40, 50, 63, 80, 100, 125 mm
- Stroke length: 1 ... 2800 mm
- Force: 483 ... 7363 N
- Double-acting
- Position sensing
- Fixed/adjustable/self-adjusting cushioning

Frequently bought together



SME/T-8M-A GRLA PUN-H NPQE QS



Guided drives DFM

- Diameter 6, 10, 12, 16, 20, 25, 32, 40, 50, 63, 80, 100 mm
- Stroke length 5 ... 400 mm
- Force 51 ... 4712 N
- Position sensing
- Fixed/adjustable cushioning
- Plain-bearing guide
- Recirculating ball bearing guide
- Variants available

Frequently bought together



SME/T-8M-A GRLA PUN-H NPQE QS





Mini slides DGST

- Diameter 6-25 mm
- Stroke lengths: 10-200 mm
- Force 25 ... 589 N
- Cushioning variants:
 - Basic integrated elastic cushioning without stroke adjustment
 - Elastic polymer cushioning elements with stroke adjustment

Frequently bought together



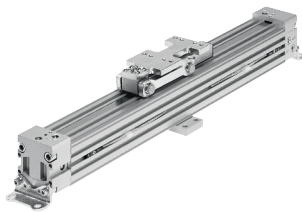
SME/T-8M-A

GRLA

PUN-H

NPQE

QS



Linear drives DGC-K

- 1:1 interchangeable with linear drive DGP
- Compact design
- No external guide, for simple drive functions
- Diameter: 18, 25, 32, 40, 50, 63, 80 mm
- Stroke length: 1 ... 8500 mm
- Force: 153 ... 3016 N
- Position sensing

Frequently bought together



SME/T-8M-A

GRLA

PUN-H

NPQE

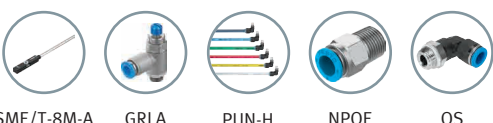
QS



Guided linear drive DGC

- Guide variants
 - Standard design
 - Plain-bearing guide
 - Recirculating ball bearing guide
- Diameter: 8, 12, 18, 25, 32, 40, 50, 63 mm
- Stroke length: 1 ... 8500 mm
- Force: 30 ... 1870 N
- Position sensing
- Various cushioning options

Frequently bought together



SME/T-8M-A

GRLA

PUN-H

NPQE

QS





Parallel grippers DHPC

- Size 6, 10, 16, 20, 25, 32, 40
- Stroke length 2 ...15 mm per gripper jaw
- Force: 3.9 ...388 N per gripper jaw
- Position sensing
- NO/ NC gripping
- Standard and flat gripper finger design

Frequently bought together



QS



PUN-H



NPQE



Angular grippers DHWC

- Size 6, 10, 16, 20, 25, 32
- Opening angle : 30°
- Total gripping torque : 5.4 ...687.6 Ncm
- Position sensing
- NO gripping

Frequently bought together



SDBT-MSB



GRLA



PUN-H



NPQE



VFOE



Radial grippers DHRC

- Size 6, 10, 16, 20, 25, 32
- Opening angle : 180°
- Total gripping torque : 4.8 ...725.6 Ncm
- Position sensing
- NO gripping

Frequently bought together



SDBT-MSB



GRLA



PUN-H



NPQE



VFOE





Long stroke parallel gripper DHPL

- Size 10, 16, 20, 25, 32, 40
- Stroke per jaw : 10, 15, 25, 30, 35, 40, 50, 60, 80, 100
- Gripping force : 21 ... 536 N
- Rack and pinion design
- Double acting with plain bearing guide

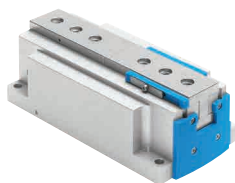
Frequently bought together



QS

PUN-H

NPQE



Flat parallel gripper HPPF

- Size 8, 12, 16, 20
- Stroke per jaw : 4, 6, 8, 10, 12, 16, 20, 24, 32, 40
- Total gripping force : 60 ... 377 N
- Positioning sensing
- Adjustable stroke

Frequently bought together



SDBT-MSB

GRLA

PUN-H

NPQE

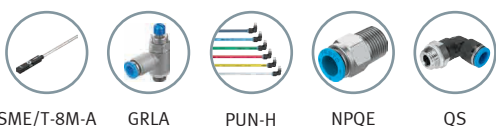
VFOE



Semi-rotary drives DRVS

- Housing protected against splash water and dust
- Size 6, 8, 12, 16, 25, 32, 40 mm
- Torque 0.15 ... 20 Nm
- Swivel angle 90, 180, 270°
- Position sensing
- Fixed elastic cushioning elements on both sides

Frequently bought together



SME/T-8M-A

GRLA

PUN-H

NPQE

QS





Semi-rotary drives DRRD

- Size 8, 10, 12, 16, 20, 25, 32, 35, 40, 50, 63 mm
- Torque 0.2 ... 112 Nm
- Swivel angle 0 ... 180°
- Position sensing
- Cushioning: elastic (P), hydraulic shock absorbers
- Flanged shaft

Frequently bought together



SME/T-8M-A



GRLA



PUN-H



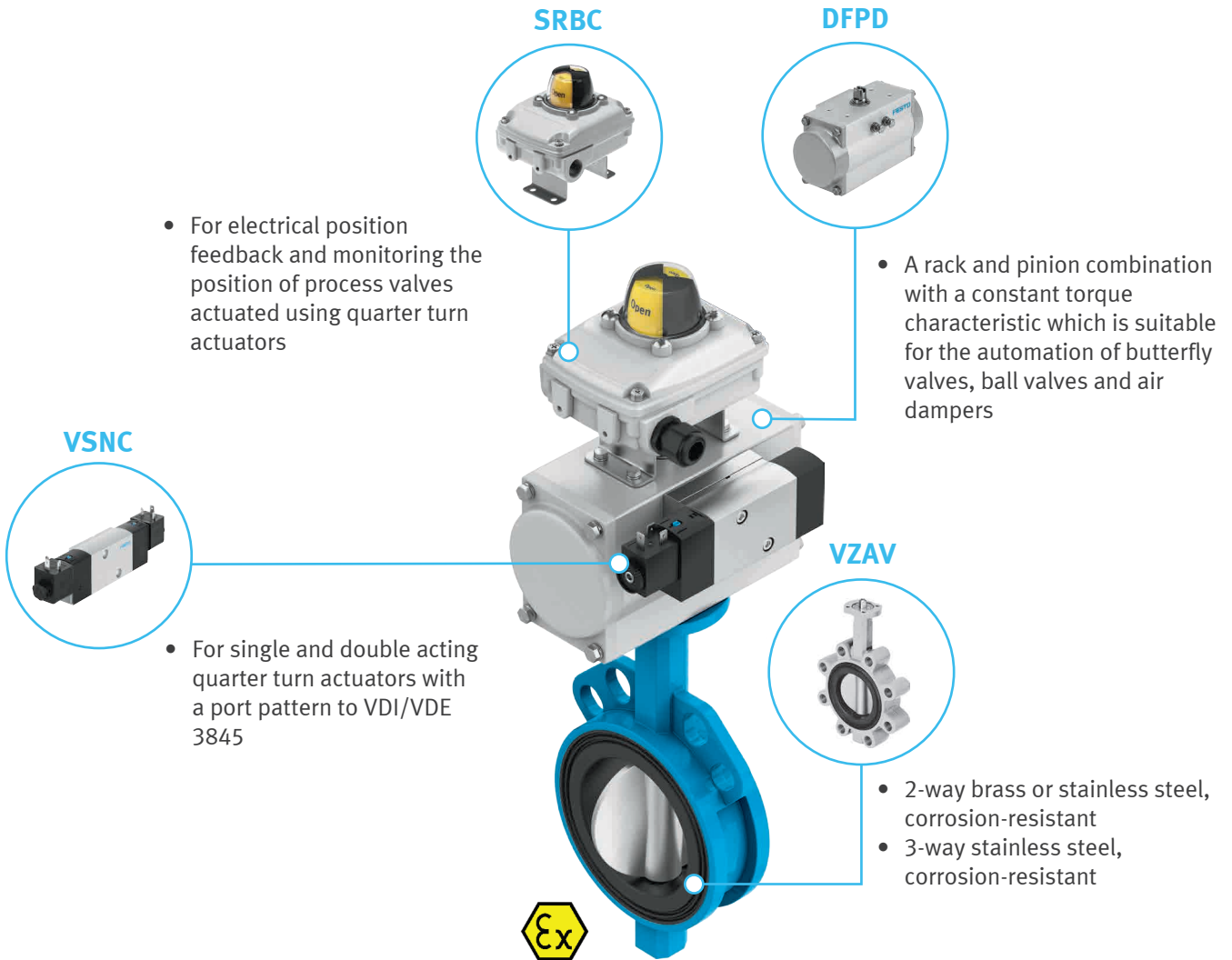
NPQE



QS



Butterfly valve unit KVZA





SIL certified
according IEC 61508

Quarter turn actuators DFPD

- With rack and pinion gear unit
- Size: 10 ... 2300
- Torque: 10 ... 2300 Nm
- Swivel angle: 0 ... 90°, 0 ... 180°
- Flange hole pattern to ISO 5211
- NAMUR connection pattern for solenoid valves
- Sensor boxes connection to VDI/VDE 3845
- Positioner connection to VDI/VDE 3847-2
- Up to SIL3 low demand mode
- ATEX II 2GD c105°C (T4)X

Frequently bought together



GRLA



SRBC



SRBG



VSNC



SRBI



SASF



Media separated valve VYKA

- Extremely precise, suitable for small volume dosing application
- High flow rate with compact size of 7mm width
- Easy to clean thanks to media separation
- Low media consumption thanks to small internal volume
- Suitable for aggressive media
- Low power consumption as a result of holding current reduction
- Developed according to ISO 13485
- FDA-listed materials: PEEK(Housing), FFPM/FPM/EPDM(Diaphragm)
- 2/2 or 3/2-Way valve (NO/NC) available
- Flow rate Kv (with water at 1 bar): 0.35 l/min
- Operating pressure: -0.5...2 bar
- Operating voltage: 12...26 V DC





Solenoid valves VZWD

- 2/2 way valve
- Port: 1/8", 1/4"
- G threads or NPT threads
- Operating pressure: 0 ... 90 bar
- Nominal pressure: 40 bar
- Electrical actuation
- Voltage 24 V DC, 110 V AC, 230 V AC
- 2/2 way poppet valve (NC), directly actuated
- FPM sealing material
- Suitable for high-pressure applications with low flow rates
- Available in brass or stainless steel versions
- Medium temperature -10 ... 80°C
- Flow rate 0.06 ... 0.16 m³/h

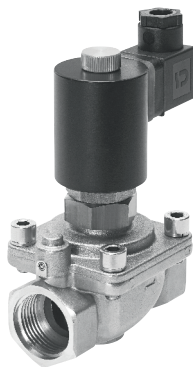
Frequently bought together



NEBU



QS



Solenoid valves VZWF

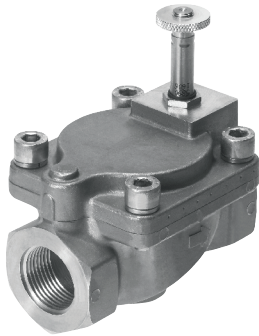
- Port 1/4", 3/8", 1/2", 3/4", 1", 1 1/4", 1 1/2", 2"
- G-thread or NPT threads
- Operating pressure: 0 ... 10 bar
- Nominal pressure: 40 bar
- Electrical actuation
- Voltage: 24 V DC, 110 V AC, 230 V AC
- 2/2 way diaphragm valve (N/C), force pilot operated
- Sealing material NBR, EPDM, FKM
- Appropriate for closed applications such as cooling or filling systems

Frequently bought together



NEBU





Solenoid valves VZWM

- 2/2 way valve
- Connection G1/4 ... G2, also available with NPT thread
- Flow rate: 1400 to 31000 l/min or 1.6 ... 39 m³/h
- Cable connection
- Solenoid actuated, piloted, pneumatic spring return
- For control of gaseous and liquid media
- NBR sealing material
- Available in brass or stainless steel versions
- Varied range of coils available
- Medium temperature: -10 ... 60°C
- Operating pressure: 0.5 ... 10 bar

Frequently bought together



MSSD



Pinch valves VZQA

- 2/2 way function
- Normally open/closed versions
- Connection 1/4", 1/2", 1"
- G or NPT thread or clamp versions available
- Pressure range: 0 ... 6 bar
- Pneumatic actuation
- 2/2 way pinch valve
- Aluminium or stainless steel housing (Clean Design)
- Sealing material EPDM, NBR, silicone
- For controlling fluid/powder media, solids, and material mixtures up to viscosity level of 4000 mm²/s
- Suitable for use with closing application

Frequently bought together



QS



SME/T-8M



VUVG-S



PUN-H





SIL certified
according IEC 61508

Angle seat valves VZXA

- Port DN 13, 1/2"; DN20, 3/4"; DN25, 1"; DN32, 1 1/4"; DN40, 1 1/2"; DN50, 2"; DN65, 2 1/2"
- G-thread to DIN ISO 228-1 or NPT-thread to ANSI/ASME B 1.20.1 or Rc-thread to DIN 10226-2
- Medium pressure 0 ... 30 bar
- Valve function 2/2, Normally Closed, Normally Open, Double Acting
- ATEX-approval
- Use with slightly contaminated media, up to 600mm²/s viscosity
- Use for steam applications possible
- Available with 3/2 banjo valve options

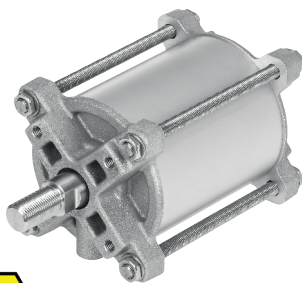
Frequently bought together



SIEN

VOFX

SMT



Linear actuators DFPC

- Optimised for process valves
- Diameter: 80, 100, 125, 160, 200, 250, 300 mm
- Stroke length: 40 ... 1600 mm
- Double-acting
- Mounting interface: ISO 5210, ISO 15552
- Option: Position sensor
- Fixed cushioning at both ends
- ATEX Declaration

Frequently bought together



SMT

GRLA

QS

NPQE





SIL certified
according IEC 61508

Actuator assembly units KDFP

- Torque range: 1 ... 3248 Nm
- Actuator type: Double acting, Single acting
- Flange size: F03 ... F16
- Shaft size: WAF8 ... WAF46
- Operating pressure: 2 ... 8 bar

Frequently bought together



PCRP



MS4



MS4-B



SIL certified
according IEC 61508

Butterfly valve assembly units KVZA

- Connection type: Wafer, Lug
- Connection standard: PN10, PN16, ANSI #150
- Sizes: DN25, 32, 40, 50, 65, 80, 100, 125, 150, 200, 250, 300
- Disc material: Ductile iron (Polyamide coated), St. 14408, St 1.4408 (PFA coated)
- Seat material: EPDM, EPDM high temperature, NBR, PTFE/Silicone

Frequently bought together



PCRP



MS4



MS4-B



SIL certified
according IEC 61508



Ball valve assembly units KVZB

- Connection type: Flange, Threaded, Clamp, Welded end
- Sizes: 1/4", 3/8", 1/2", 3/4", 1", 1-1/2", 2", 2-1/2", 3", 4", 6", 8"
- Operating pressure up to 63 bar
- Valve design: 2/2 way, 3/2 way
- Body material: Brass, Stainless steel

Frequently bought together



PCRP



MS4



MS4-B





SIL certified
according IEC 61508

Sensor boxes SRBC

- Measuring principle electromechanical magnetic reed or inductive
- Switching element function Toggle switch, single-pole (SPDT)
- For DC and AC
- Pre-fitted mounting bridge
- Cable connector and blanking plug included in the scope of delivery
- IP67, NEMA 4/4X protection
- ATEX II 2GD: Ex-ia-NAMUR version
- SIL2 according to IEC61508

Frequently bought together



DFPD



Sensor boxes SRBG

- Inductive measurement principle with dual sensor
- Switching component function N/O contact, in the case of AS-Interface switchable N/C-N/O contact
- Operating voltage 6 ... 60 V DC
- Direct mounting on quarter turn actuators to VDI/VDE 3845

Frequently bought together



SASF



Sensor boxes SRBI

- Compact limit switch box designed for small actuator sizes
- Inductive measurement principle with dual sensor
- PNP switching output
- Operating voltage 10 ... 30 V DC
- Direct mounting on quarter turn actuators to VDI/VDE 3845

Frequently bought together



SASF





Positioners CMSX

- Positioner for double/single-acting quarter-turn actuator or linear
- Namur connection interface (VDI/VDE 3845)
- Configurable characteristic curves: Linear/Equal percentage/User free
- Polycarbonate housing
- Configurable set-point signal 0-10V/0-20mA/4-20mA
- 24VDC operating voltage
- IP65 protection
- Analogue feedback signal 4-20mA
- Configurable emergency input signal: Open/Close/Hold
- Pressure range 3-8 bar
- Operating temperature -5 ... 60°C
- Rotation angle 0 ... 110°
- Repetition accuracy $\pm 1\%$

Frequently bought together



QS



Positioners CMSH

- Intelligent positioner for double/single-acting quarter-turn actuator or linear
- Namur connection interface (VDI/VDE 3845-1 or VDI/VDE 3847-2)
- HART interface
- 4-20mA loop-powered, 2-wire
- Aluminium, powder-coated housing
- IP66, IP67 protection
- Swapable manifold block for double/single acting function
- Self monitoring and diagnostics option
- Partial-stroke test
- Option for pressure gauge connection
- Pressure range 1.4-8 bar
- Operating temperature -40 ... 80°C
- Rotation angle 0 ... 115°



SIL certified
according IEC 61508

Frequently bought together



QS



PCRP





Stainless steel filter regulators PCRP

- Robust housing for the specific requirements of the PA industry
- Suitable for use outdoors and at temperatures down to - 60°
- Resistant to UV radiation and corrosive environments
- Port G 1/8, G 1/4, NPT 1/4, NPT 1/2
- Pressure 0.5 ... 7 bar, 0.5 ... 12 bar
- Flow rate 1600 ... 6440 L/min
- Manual drain
- Stainless steel filter cartridge

Frequently bought together



QS

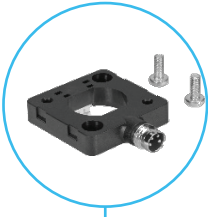


Pressure sensors SPAN

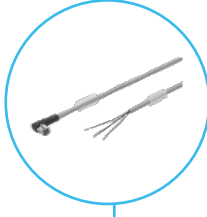
QS



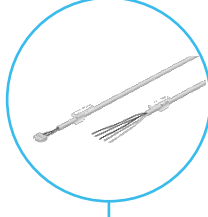
SASC



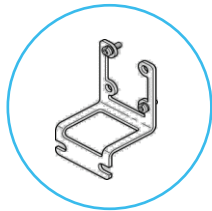
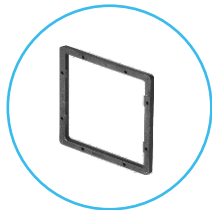
NEBU



NEBS



- Easy installation by quick connector and L1 plug connector or M8 electrical adapters.



SMAH

- Front panel + wall mounting kit.

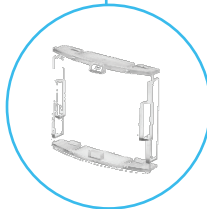


IO-Link



SPAN

- Compact design 30x30mm with IP40 protection.
- 13 pressure measuring ranges (with vacuum).
- Various switching functions.
- Digital (PNP/NPN, NO/NC) or Analogue outputs (0...10V, 4...20mA).
- Serial communication intergrated using IO-Link 1.1.



SACC

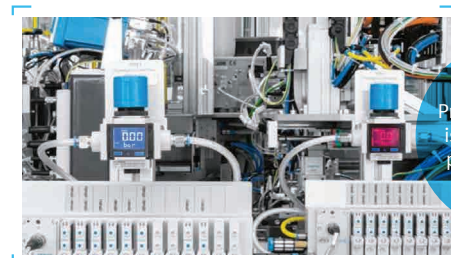
- Safety guard.



NEW

SPAN-B

- Best fit for basic application.
- Compact design 30 x 30 mm with IP40.
- 3 pressure measuring ranges -1 to 10 bar.
- 1 switchable digital electrical output, PNP/NPN, NO/NC.
- Cu, ZN, Ni-free.



Precise pressure is monitored in production line



Cylinder switches SDBT-MSB / SDBC-MSB

- Basic cylinder switches with solid-state technology
- Best fit for basic application
- For T slot & C slot pneumatic actuator
- Switching outputs PNP, NPN and NO option available

Frequently bought together



NEBU



Cylinder switch SDBT-MSX

- The programmable proximity switch with auto teach-in
- Capacitive teach button
- Automatic switching point detection
- Easier and faster installation, no precision adjustment needed.
- For T-Slot pneumatic actuator
- Programmable switching output PNP, NPN and NO, NC
- IP65/68
- Electrical connection M8 or Open end
- 10.....30V DC

Frequently bought together



NEBU



Cylinder switches SMT-8M, SMT-10M

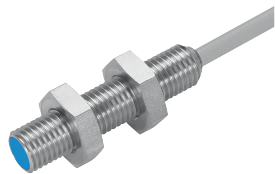
- Cylinder switches with solid-state technology
- For T slot & C slot pneumatic actuator
- Switching outputs PNP, NPN and NO, NC option available
- Electrical connection M8, M12, open end cable
- 5 ... 30 V DC

Frequently bought together



NEBU





Inductive sensors SIEN

- Voltage 10 ... 34V DC
- Size 4 mm, M5, 6.5 mm, M8, M12, M18, M30
- PNP, NPN
- Flush or non-flush mounting

Frequently bought together



NEBU



Position sensors SRBS

- For semi-rotary drives DRVS 6 ... 40 and DSM 8, 10, 12
- Switching outputs PNP, NPN and NO, NC freely programmable
- Electrical connection: M8
- Sensing range: 0 ... 270°

Frequently bought together



NEBU



DRVS



DSM



Pressure sensors SPAN-B

- Best fit for basic application
- Compact 30 x 30 mm design
- Blue display with white writing, changeable to red display colour
- 3 pressure measuring range from -1 to 10 bar
- 1 switchable digital electrical output, PNP/NPN, NO/NC
- Intuitive menu navigation
- Pneumatic connection: G1/8, R1/8, M5, push-in connector 4mm
- Protection class IP40
- Cu, Zn, Ni-free
- Optional with electrical connection M8 cable

Frequently bought together



NEBU



NEBS





IO-Link

Pressure sensors SPAN

- Compact design 30 x 30 mm
- High-contrast display with blue backlighting
- 13 Pressure measuring range from -1 to 16 bar
- Voltage 20 ...30 V DC
- 2 Switching output PNP / NPN , NO/NC selectable
- Electrical output 0.1 ... 10 V, 1 ... 5 V, 4 ... 20 mA
- Pneumatic connection G1/8, R1/8, NPT1/8, M5, push-in connector 4 mm,
- Pressure/vacuum switches

Frequently bought together



NEBU



QS



IO-Link

Pressure sensors SPAU

- Blue-red LCD
- IP65 protection
- Pressure measuring range -1 to 16 bar
- Voltage 20 ...30 V DC
- Switching output 2x PNP or 2x NPN selectable
- Electrical output 0.1 ... 10 V, 1 ... 5 V, 4 ... 20 mA
- Pneumatic connection G1/8, R1/8, R1/4, NPT1/8, M5, M7, push-in connector 4 mm, 6 mm, 5/32"
- Pressure switch
- Vacuum switch

Frequently bought together



NEBU



QS





Pressure sensors SDE5

- Pressure measuring range -1 ... 10 bar
- Voltage 15 ... 30 V DC
- PNP/NPN digital output and 0...10V analogue output available
- Pressure/vacuum switches
- Switch status display by a visible LED
- Freely programmable

Frequently bought together



PUN-H



QS



 **IO-Link**

Flow sensors SFAH

- ECO function with option to switch off the display
- Serial communication integrated using IO-Link® 1.1
- Flow measuring ranges:
 - 0.002 ... 0.1 l/min
 - 0.01 ... 0.5 l/min
 - 0.02 ... 1 l/min
 - 0.1 ... 5 l/min
 - 0.2 ... 10 l/min
 - 1 ... 50 l/min
 - 2 ... 100 l/min
 - 4 ... 200 l/min
- Switching output:
 - NPN
 - PNP
 - IO-Link®
- Analogue output:
 - 0 .. 10V
 - 1 ... 5V
 - 4 ... 20mA

Frequently bought together



PUN-H



NEBU



QS





Connecting cables NEBU

- Smooth and harmonious fit and function
- Connecting cables for standard, drag chain and robot applications
- Versions with switching status display
- Welding field immune designs
- Easy-to-clean designs approved for use in the food and packaging sector
- Cable length 0.1 ... 30 m freely selectable

Frequently bought together



SPAN



SPAU



CPX

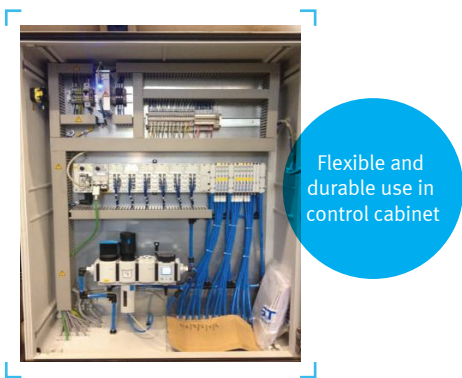
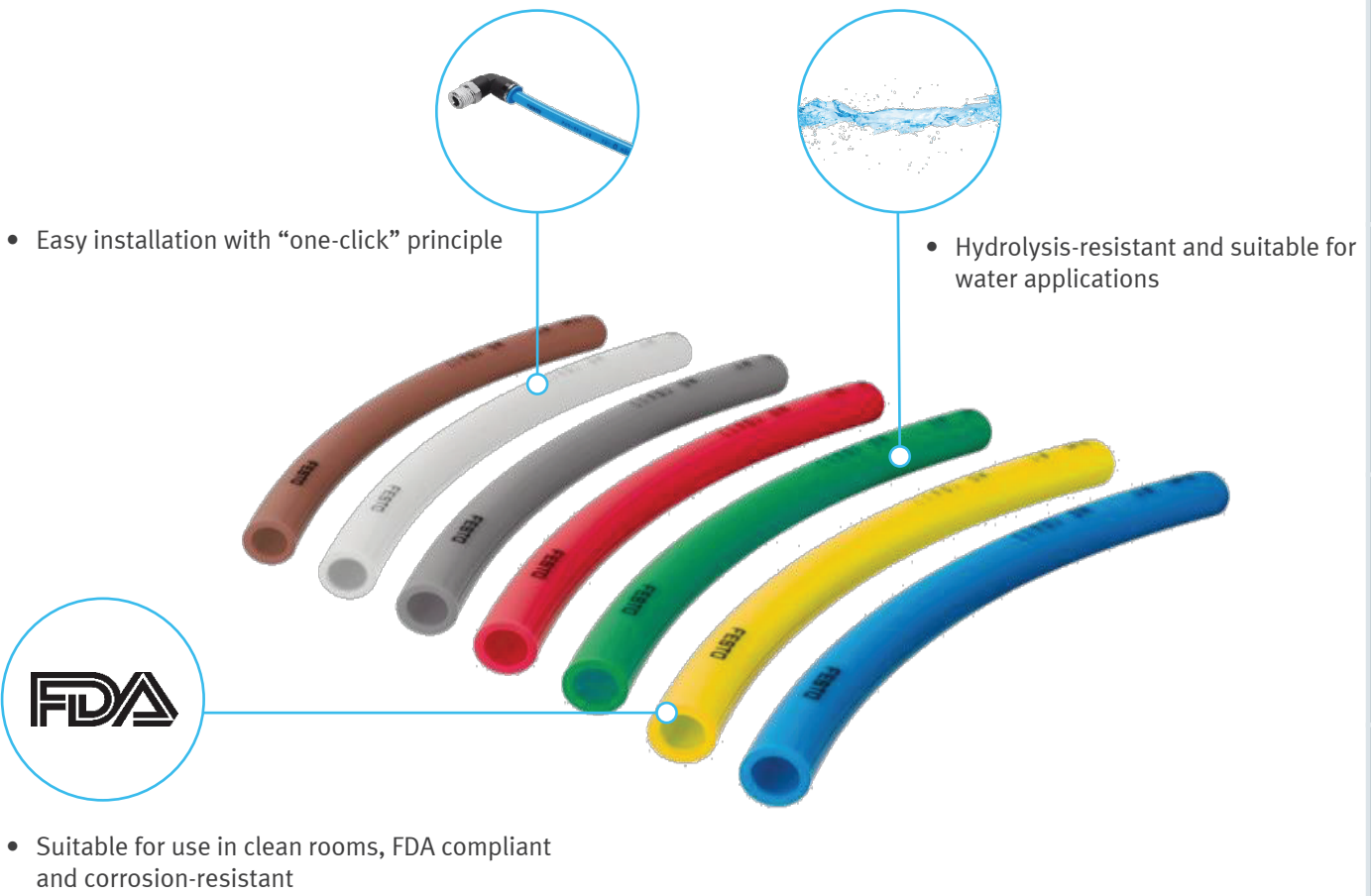


CPX-E



Polyurethane tubings PUN-H

- Easy installation with “one-click” principle
- Hydrolysis-resistant and suitable for water applications
- Suitable for use in clean rooms, FDA compliant and corrosion-resistant





Air preparation MS2-B

- Regulator, filter regulator
- Connection: QS6, M5
- Flow rate: 140 ... 350 l/min
- Pressure range: 0.5... 7 bar
- Temperature range: -5... +50°C
- Filtration grade: 5 um

Frequently bought together



QS



PUN-H



NPQE



Air preparation MS4-B

- Regulator, filter regulator, manual on/off valve, electrical on/off valve
- Connection: G1/4
- Flow rate: 1200 ... 1400 l/min
- Pressure range: 0.5 ... 10 bar
- Temperature range: -5 ... +50°C

Frequently bought together



QS



PUN-H



NPQE



Air preparation MS6-B

- Regulator, filter regulator, manual on/off valve, electrical on/off valve
- Connection: G1/2
- Flow rate: 1500 ... 5800 l/min
- Pressure range: 0.5 ... 10 bar
- Temperature range: -5 ... +50°C
- Filtration grade: 5, 40 um

Frequently bought together



QS



PUN-H



NPQE





Air preparation MS4/6

- Port: G1/8, G1/4, G3/8, G1/2
- Proof pressure: 20 bar
- Pressure: 0.3 ... 7 bar, 0.3 ... 4 bar, 0.5 ... 12 bar, 0.5 ... 16 bar
- Filtration: 5 and 40 µm
- Flow rate: 850 ... 7,200 l/min
- Plastic or metal bowl option
- Manual or Auto drain option

Frequently bought together



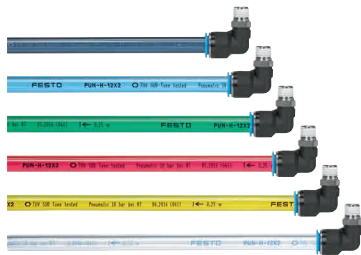
QS



PUN-H



NPQE



Polyurethane tubings PUN-H

- Large selection of variants
- Highly resistant to stress cracks, microbes and hydrolysis
- Outside diameter: 3 ... 16 mm
- Internal diameter: 2.1 ... 11 mm
- Temperature-dependent operating pressure: -0.95 ... 10 bar
- Ambient temperature: -35 ... 60° C
- Operating medium:
 - Compressed air
 - Vacuum
 - Water

Frequently bought together



QS



NPQE





Push-in fittings NPQE

- Wide designs & variations
- Standard thread :M3, M5, M7, R1/8, R1/4, R3/8, R1/2
- OD Tubing: 3, 4, 6, 8, 10, 12, 14, 16 mm
- Threaded connection: R thread

Frequently bought together



PUN-H



Push-in fittings QS

- Wide designs & variations
- Mini-series port: M3, M5, M7, M 6x0.75, M 8x0.75, R1/8, G1/8
- Standard-series port: R1/8, R1/4, R1/2, R3/8, G1/8, G1/4, G1/2, G3/8, G3/4
- OD Tubing: 2, 3, 4, 6, 8, 10, 12, 16, 22 mm
- Threaded connection: R, G
- Suitable for vacuum

Frequently bought together



PUN-H



Flow control valves VFOE

- Connection : M5,M7, R1/8, R1/4, R 3/8, R 1/2, G 1/8, G 1/4, G 3/8, G 1/2
- Plug connector 4, 6, 8, 10, 12 mm
- Flow rate 0 ... 1300 l/min
- Non-return, throttle in and throttle out function

Frequently bought together



PUN-H



Flow control valves GRLA/Z-D

- Connection: M3, M5, G 1/8, G 1/4, G 3/8, G 1/2, also available with NPT thread
- Plug connector: 3, 4, 6, 8, 10, 12 mm
- Flow rate: 0 ... 1,400 l/min
- Non-return and flow control valve

Frequently bought together



PUN-H



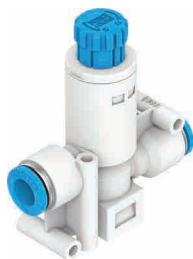
Pilot check valves HGL

- Manually actuated venting with separate accessories possible
- Port: M5, G1/8, G1/4, G3/8, G1/2
- Flow rate: 130 ... 1600 l/min
- Shut-off valve
- Pneumatic piloted non-return valve

Frequently bought together



PUN-H



Pressure regulator VRPA

- In line with /without pressure gauge
- L-shape with pressure gauge
- Connection: QS4, QS6, QS8, M5, R1/4, R1/2
- Flow rate: 80 ... 130 l/min
- Pressure range: 1 ... 8 bar

Frequently bought together



QS



PUN-H



NPQE





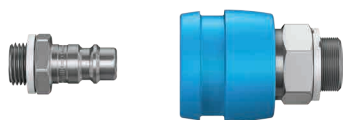
Quick coupling sockets KD

- Connection M3, M5, G 1/8, G 1/4, G 3/8, G 1/2
- Diameter 2, 3, 4, 6, 9, 13 mm
- Threaded connection:
 - Metric thread with sealant
 - G thread with sealing ring
- Safety coupling to ISO 4414

Frequently bought together



PUN-H



Safety couplings NPHS-D6/S6

- AG connection: G 1/8, G 1/4, G 3/8, G 1/2
- IG connection: G 1/4, G 3/8, G 1/2
- Barbed connector: N9
- Optional 3/2-way hand slide valve
- Certified by IFA (Institute for Occupational Safety and Health)

Frequently bought together



PUN-H



Silencers U

- Threaded connection: M5, G1/2, G1/4, G1/8, G3/8, G3/4, G1
- Barbed connector connection: PK-3, PK-4
- Noise level: 65 ... 84 dB(A)





Silencers AMTE

- High-temperature resistance up to 80°C
- Metal variant
- Connecting threads M3, M5, G1/8, G1/4, G3/8, G1/2, G3/4, G1,
- Sound pressure level 71 ... 95 dB(A)



Suction cups VAS

- Suction cup size diameter 1 to 125 mm
- Connection:
 - Male thread
- Round suction cup:
 - Standard
 - Bellows, 1.5 convolutions

Frequently bought together



OVEL



VN



OVEM



Australia
Head Office
Melbourne
Festo Pty. Ltd
179-187 Browns Road
P.O. Box 261
Noble Park Nth VIC 3174
☎ +61 1300 88 96 96
✉ info_au@festo.com
Branch Offices:
Perth, Queensland, Sydney

Indonesia
Head Office
PT. Festo
Jl. Tekno V Blok A/ 1 Sektor XI
Kawasan Industri BSD
Serpong Tangerang 15314
Banten Indonesia
☎ +62 804 1 2 33786
✉ sales_id@festo.com

Malaysia
Head Office
Festo Sdn Bhd
14A, Jalan Teknologi
Taman Sains Selangor 1
Kota Damansara
47810 Petaling Jaya
Selangor
☎ +60 3 6144 1122
✉ csc_my@festo.com
Branch Offices:
Johor Bahru, Melaka, Penang

New Zealand
Head Office
Festo Ltd
20 Fisher Crescent
Mount Wellington
Auckland
☎ +64 (0)9 574 1094
✉ info_nz@festo.com
Branch Office:
Christchurch

Philippines
Head Office
Festo Inc.
KM 18, West Service Road
South Superhighway
1700 Paranaque City
Metro Manila
☎ +63 1800 10 12 33786
✉ festo_ph@festo.com

Singapore
Head Office
Festo Pte. Ltd.
6 Kian Teck Way
Singapore 628754
☎ +65 6285 8585
✉ sales.sg@festo.com

Thailand
Head Office
Festo Ltd.
202 Kanchanapisek Road
Ramintra Khannayao
Bangkok 10230, Thailand
☎ +66 1 800 019 051
✉ sales_th@festo.co

Vietnam
Head Office
Festo Co., Ltd
Floor 2, HQ Tower, No. 9,
Tran Nao Street, Quarter 3
An Khanh Ward, Thu Duc City,
Ho Chi Minh City, Viet Nam
☎ +84 28 3514 5600
✉ sales_vn@festo.com
Branch Office:
Hanoi



Connect with Us



Festo Sea



Festo Oceania